

Set for May 21st

Windbergs to Showcase CTPS In “Challenge” Exhibition

By Nancy Manoogian

The first “Challenge Subject” Exhibition set for May 21st at the Windberg Art Center has become a gala event! In addition, Dalhart Windberg and Michael Windberg will be exhibiting original artwork and prints during this event.

President Nancy Taylor and Exhibit Chair Susan Spohn announced a Best of Show award, a \$250 gift certificate, is being donated by the Windbergs. The Rita Lallathin Award of \$125 will also be awarded. Ribbons will be presented to winners of the eight challenge categories.

The Windberg Art Center is “showcasing” this spring art show for CTPS and it seems like the perfect opportunity to exhibit our challenge paintings. Members may enter one painting in each of the eight 2010/2011 challenge subjects up to a total of eight paintings. Only new work completed during 2010/2011 year will be shown. Paintings started during our August 2010 workshop may be included. Paintings do not need to be for sale.

CTPS members are encouraged to invite their collectors, friends and family. Invitations are available...contact Nancy Taylor or Sue Spohn. The Windbergs have sent invitations to collectors on their extensive mailing list. Door prizes will be drawn every hour during the Saturday night event. Libations (wine) and light refreshments will be served. Please contact Char Sylvest to sign up for a food donation at noldefan@gmail.com.

Acting as judges at this event will be Dalhart Windberg and Michael Windberg

About our judges...

Legendary Texas artist, Dalhart Windberg, has a long line of awards and tributes to his credit. In 1967 he quit teaching in order to paint full-time. By 1972, Windberg was the sole artist of the American Masters Foundation; seven years later, he was named Texas State Artist. Today, he continues to paint at his gallery at the Windberg Art Center.

Dalhart Windberg's eldest son, Michael Wind-

berg, has made his own mark as a serious painter of Texas art themed landscapes and historical subjects. Michael has also gained a unique painting perspective from his work as an art conservator.

The 8 Challenge Subjects are:

September – “Secret Life of Everyday Things”

Seeing the beauty in ordinary objects in a still life painting. Think of objects not commonly painted, examples might include mechanical parts or a lamp.

October – “Oh, the Places We’ve Been” Paintings from places other than Texas. This is the time to pull out those vacation photos and come up with a painting. The more exotic the locale the better!

November – “Private Moments in Public Spaces” Capturing people in their fleeting unguarded moments.

December - “Big City Lights” Night scenes of the city which could even include fireworks or Christmas lights.

January - “Reflections of Myself” Taking a look at ourselves...how we, the artists, see themselves."

February – “Breaking Down the Elements” Simplifying landscapes into abstract shapes.

March – “The Other Wildflowers of Texas” Bluebonnets and Paint Brushes are beautiful but give the other flowers of Texas a spot in the limelight.

April – “Stormy Weather” – April brings showers but we'll include all kinds of stormy weather from drizzles, tornados, blizzards and everything in between.



Dalhart Windberg “West Texas Royalty”

~ Show Calendar ~
May 13, 2011

Deadline to submit entries to Exhibit Chair,
Susan Spohn at sue@suzysue.com.
See show prospectus at www.centexpastel.com
for details.

May 21, 2011

10:00 am Deadline to deliver artwork to
Windberg Art Center

11:00 am Installation of artwork at W.A.C.
5:00 pm to 9:00 pm Reception and door prizes
7:00 pm Awards Ceremony

Exhibition Dates
May 21 - May 27

10 am - May 27 Pick up paintings

~ Summer Critique Sessions ~

Saturday June 18th & July 16th

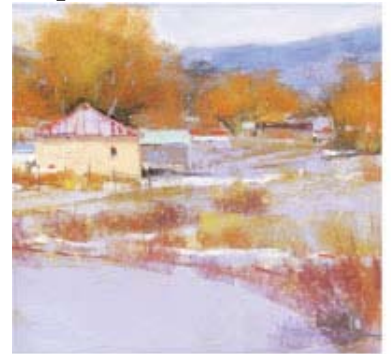
10:00 a.m. to Noon

at the Windberg Art Center,
7110 North IH 35, Georgetown, TX 78626

Bring paintings for the August
Competition and Exhibition for
constructive but gentle critiques

New Mexico Artist

**Dinah Worman to Conduct
August Landscape
Workshop**



Winter Gold by Dinah Worman

Time for Summer Critiques!

It's time for our regular monthly meetings to
give way to our Summer Critique Sessions set for
June 18th and July 16th from 10 a.m. to noon.

These sessions give members an opportunity to have
their pastels artwork critiqued prior to the August 14th
Annual Membership Competition. Here are a few
things to keep in mind:

- Keep the number of pieces to no more than
three unless there is time at the end for more.
- The reason for a critique is to receive constructive
advice to improve your work. This is not a
time for show and tell.
- The paintings should be at least 90 % complete
but not framed. It is difficult to critique work
that is just started, but at the same time, if it
is framed there is no point in a critique unless
you want to take the framing apart.
- One thing to keep in mind is that whatever is said
is simply a suggestion and it is up to each
artist to judge for themselves what is in
keeping with their vision.
 - It is helpful to take notes about what is said
so that you can reflect on and remember them
at home.

**Members, please remember when you are giving
your opinions, not to overwhelm someone with
very minor criticisms.**

Space is still
available for Dinah
Worman's August Work-
shop which takes place
August 13 and 14, in
conjunction with CTPS'
10th Annual Exhibition

Workshop Chair Denise LaRue Mahlke reminds
members that May 21st is the deadline for member
registration and a fee of \$75 will hold your space for one
of the 20 easels at the Windberg Art Center. Tuition for
the workshop is \$225. The workshop will be made avail-
able to non-members after May 21st.

Worman will also judge the annual competition to
be held again at the Cultural Activities Center, Temple, TX.

Our August instructor will share her extensive
knowledge on how to approach and execute a successful
painting. Students will learn how she fills her paintings
with strong and unique designs and her wonderful use of
color.

Worman's landscape paintings are instantly recog-
nizable for clarity and depth. Light is everywhere. It filters
through trees and streams, between the clouds. She is
able to retain this vitality because she is continually
renewing her vision. She uses various methods of staying
fresh such as switching back and forth from oil to pastel or
intentionally mixing up her palette. This forces her to
focus on the subject at hand rather than on a habitual way
of approaching the image.

For a preview of her work, visit her website and
Act One Gallery's: <http://dkworman.com> and
<http://actonegallery.com>

Another Opportunity to Exhibit your art...

Members of CTPS are invited to exhibit pastel artwork at the Healing Arts Gallery at St. David's Hospital, Georgetown, September 28th through October 25th.

Schedule for this exhibit:

Deliver art to hospital: Wednesday, September 28th at 1:30 p.m.

Pick up art: Tuesday, Oct 25th between 1:30 and 2p.m.

More details will be made available in August but members are encouraged to participate in this well attended venue.

With Deepest Sympathy

To **Marian Johnson** and her family for their loss. Long-time CTPS member and former Historian Bob Johnson died on March 12th. Bob and Marian were very active in many roles and were supportive in CTPS' many events. Bob will be remembered for his humor, ready smile and for his wonderful collection of pastel paintings.

The Williamson County Sun, March 16, 2011 7A

Robert Allen Johnson

Robert Allen Johnson, of Georgetown, passed away March 12, 2011, after a long illness.

He was born to Cora Mildred Johnson and John M. Johnson in Richmond, Indiana, on March 21, 1937.

Bob Graduated in mechanical engineering from Purdue University. He enjoyed being an engineer and holds several patents in his career field.

He was married to Marian L. Stowe on February 4, 1961, and they raised three children: Eric, Lawrence and Heidi Johnson. They were blessed with grandchildren Christina Goin, and James and Jonathon Gregory.

After living on both coasts,



Colorado, Illinois and Kentucky, they settled in Plano, Texas, moved to Seguin and Austin, retiring in Georgetown.

Bob's favorite things were family, church, his beloved pets and the Central Texas Pas-

tel Society. He was a hunter, fisherman, golfer and accomplished artist and painter in pastels, acrylic and wood carving.

Services will be held at 1 p.m. Wednesday at Faith Lutheran Church on Williams Drive in Georgetown.

Memorials can be made to Faith Lutheran Church.

Thanks to Dr. Nacole and staff, house doctors of Texas Encompass Home Health and Lighthouse Hospice.

Tenth Annual Competition Guidelines Announced

It's time to think about being competitive!

It time to start painting for CTPS' Tenth Annual Membership Competition and Exhibition to be held at the Cultural Activities Center, Temple. Our awards ceremony will be held August 12th during the CAC's opening reception. Our exhibit will hang from August 12 thru October 22nd.. This gala event concludes our Society's very busy 13th year.

Categories include: Landscape, Wildlife, Portrait and Still life.

Judge for the competition will be Taos, NM artist Dinah Worman.

The competition prospectus, containing installation dates, categories and prizes, will be posted on the CTPS website in May. As you paint away, working on that prize-winning pastel masterpiece, keep these rules in mind:

Competition Entry Guidelines

- Competition is open to CTPS members only. Dues for 2010/2011 must be current and paid before May 21th.
- All entries must be ORIGINAL. (Source material must be available upon request.)
- Paintings being entered must have been completed without supervision; no workshop or classroom art will be allowed.
- Paintings must be at least 90% pastel
- All work must have been executed within the last 2years and not shown at the CAC in prior exhibits.
- No oil pastels.
- Artwork does not have to be for sale.
- Paintings must be suitably framed under glass or Plexiglas, wired and ready to hand. No saw-toothed hangers.
- Paintings should be delivered enclosed in a bubble wrap envelope with a label on front stating artist's name and painting title.
- CTPS reserves the right to reject any artwork that appears to be less than 90% pastel, or, is an inappropriate subject as set by the CAC guidelines.

Competition Chair Sue Spohn reports that she is receiving donations from major art and pastel companies which will be offered as prizes in the competition.

Prospectus will be sent the membership in June. So...it's time to get to your easel and paint!

WELCOME TO CTPS

Thank you to all new and renewing members for their continued support and interest in CTPS and its many events. Please email any email or address changes to cntxpastel@aol.com

Mary Caldwell, 811 Clearview Road, Georgetown, TX 78626; 512-819-9944; cell 512-461-6567; email: keevus16@verizon.net; Birthday November 2; Husband, Ken.

From Our Members...

From Holly Dunn ~

Dear CTPS Members- I just want to let you know how very much I appreciated, and was touched by the many expressions of sympathy and concern over the recent loss of my Mother. Your friendship and support means so much! Blessings

An event not to be missed!

IAPS Hosts 9th Biennial Convention

The Ninth Biennial International Association of Pastel Societies will be held June 2 through 5, 2011 at Hotel Albuquerque, NM. And...it is not too late to make plans to attend.

Every other year, International Association of Pastel Societies sponsors a convention where pastel artists from all over the world can gather to attend lectures, demonstrations, hands-on classes, explore the world of pastel materials in the trade show area, and enjoy the excitement of being part of the world community of pastel artists

Go to www.pastelinternational.com for all information about IAPS, of which CTPS is a member, the convention and all pre-convention and post-convention workshops and master classes.

Girault Drawing Set for August!

Many of you brought guests to a CTPS meeting and your name will be entered in a drawing for a new set of Girault pastels!

President Nancy Taylor implemented the new program in September 2010 to boost membership...one of her term goals. And...it worked! Many of the guests you introduced to CTPS have become members and that is appreciated! The Drawing will take place at the conclusion of CTPS' year, August 2011. Good luck!

Calendar of Events

Monthly meetings (unless otherwise noted)

9:30 a.m. to noon at the Windberg Art Center, 7110 North IH 35, Georgetown, TX 78626

May 21st ~ CTPS' First Spring "Artist Challenges" Show at the Windberg Art Center. An exhibition of paintings created by the membership...their interpretations of the 2010/2011 Challenge Subjects.

June 18th & July 16th 10 a.m. to noon ~ Informal summer critique sessions. Members are encouraged to bring 1 -2 paintings for the group to critique and offer advice on finishing. These will be held in the lobby area of the Windberg Art Center.

August 8th 10 a.m. Deliver paintings for the 10th Annual Competition and Exhibition, Cultural Activities Center, Temple, TX

August 12th 7 p.m. ~ Artist Reception and Awards Ceremony for 10th Annual Competition and Exhibition, at the Cultural Activities Center, Temple.

August 13 & 14 ~ Landscape Workshop with New Mexico artist Dinah Worman at Windberg Art Center.

September 17th ~ CTPS begins its 14th year at Windberg Art Center.

September 28th ~ St. David's Hospital, Georgetown Exhibition: Drop off Wednesday September 28th. Exhibit runs through October 25th.

October 22nd ~ Take down, 10th Annual Competition & Exhibition, CAC, Temple.

DVD/VHS Lending Library Becomes A Reality!

CTPS now has a DVD and VHS Library on wheels! Vice President Jane Frederick took charge and organized our lending Library, packed neatly and conveniently in a wheeled, carry-on suitcase. Donated and "loaned" DVD and VHS art instruction and art history videos include subjects by Bob Rohm, Ann Templeton, Doug Dawson and other well known professional artists.

Members may check out a DVD or VHS by leaving a personal check for the cost of the item. The check will not be cashed and will be given back to the member when the item is returned. Usual check out is for one month. If you wish to donate or loan such items from your collection, contact Jane at 512-834-1807 or email jfrederick13@att.net.

And...we thank you!

CTPS and outgoing Hospitality Chair, Char Sylvest, thank all who volunteered to host monthly meetings with their favorite refreshments. It has been said, that our programs are top notch, business meetings are punctual and to the point and our refreshment table is our favorite visiting spot!

Hosts are needed for the coming Society year starting in September. To sign up for a particular month, contact our new Host Chair Margaret Roush at 512-863-4218 or cr.art@verizon.net or CRARTWCAG@gmail.com or sign up at our next meeting.

Membership Has It's Privileges!

CTPS membership has benefits beyond the education, fellowship and philanthropy. Our sponsors offer valuable discounts at local art supply stores:

Stinger Studio, 4410 Williams Drive, Suite 102, Georgetown, 78628 sonia@stingerstudio.com phone, 512-869-5544. Sonia Colonna Mathis offers artists wholesale pricing on framing original art.

Asel Art, offers 25% Off regular prices in the store only. www.aselart.com (note: discounts only apply in the store not online)

Framer's Gallery, 610 S. Main St. Georgetown offers 30% off framing original Art. 512-633-0868

The Windberg Art Center has an Art Store in their art center and offers a 10% discount! Not only are there ample supplies for the Windbergs' workshops and classes but they now carry Rembrandt pastels in open stock and a good supply of Windberg pastel paper. After our next meeting, take time to visit their art Store and tempt yourself a little! windbergartcenter.com

2011/2012 Officers

You are encouraged to contact officers any time if you have ideas, questions or recommendations pertaining to CTPS events!

Nancy Taylor, President

ntaylor63@suddenlink.net 512-591-7464

Jane Frederick Vice President & President-Elect

jfrederick13@att.net 512-834-1807

Nancy Ohlenbusch, Secretary

nancyoh@suddenlink.net 512-868-0974

Nancy Manoogian, Treasurer

cntxpastel@aol.com 254-773-2286

Kathy McCarter, Parliamentarian

kathy.mccarter@sbcglobal.net 512-255-1521

Kathleen Hornyak, Historian

khornyak@austin.rr.com 512-246-2042

Susan Spohn, Exhibition Chair

sue@suzyssue.com 512-246-2107

Program Chair ~ Jeri Salter

jsalter@austin.rr.com 512-671-7235

Workshop Chair ~ Denise Mahlke

dlaruem@yahoo.com 512-863-4788

Publicity Chair ~ Glenn Hollowell

glenn@hollowell.org 512-337-7150

Membership Chair ~ Char Sylvest

noldefan@gmail.com 512-863-7739

Webmaster ~ Susan Spohn

sue@suzyssue.com 512-246-2107

Hospitality Chair ~ Margaret Roush

crartwcag@gmail.com 512-863-4218

IAPS Representative ~ Susan Spohn

On-line Portfolio Chair ~ Susan Spohn

sue@suzyssue.com 512-246-2107

Position Open, "Pastel Expressions" Editor

cntxpastel@aol.com

Jane Frederick, "Pastel Expressions" Asst. Editor

jfrederick13@att.net 512-834-1807

Contributions Welcomed...

Pastel Expressions is published every other month starting in September and coordinates with CTPS events. Newsletter Deadline: April. 15th for the May/Summer edition. Your contributions are welcome! Submit items to CTPS Pastel Expressions, P O Box 3448, Temple, TX 76505-3448, or email cntxpastel@aol.com Questions or comments concerning CTPS may be directed to 254-773-2286, or the email or mailing address above. Visit CTPS' website at centexpastel.com
Nancy Manoogian, Editor
Jane Frederick, Assistant Editor

March Challenge Paintings “The Other Wildflowers of Texas”

Photos by Chuck Roush (except for the one of him)



Chuck Roush



Margaret Roush



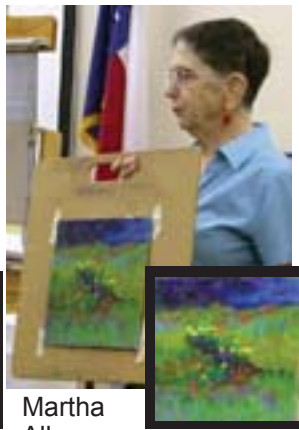
Bill Gilliam



Holly Dunn



Nancy Taylor



Martha Allan



Nancy Ohlenbusch

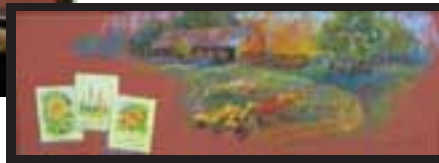


Richard Banh



Bob Douglass
(assisted by Kathy McCarter)

“The Other Wild Flowers of Texas” challenge brought out a myriad of blooms with nary a bluebonnet or indian paint brush to be seen. Be sure to participate in the challenge paintings if you can - there’s never been a kinder or more appreciative audience to show your work to and every challenge helps grow your artistic limits. Even more so if it’s a subject or style you normally might not try.



Bob Rohm Demo & Mini Workshop



Bob Rohm

Bob Rohm began with a fairly simple photo of a fence line in a farm land type landscape. After discussing with us the importance of values and warm and cool colors he began to block in his image. He prefers white Kitty Wallis paper and uses a barrier cream on his hands. After planning the painting and deciding on the focal point he picks the 4 values he will use (never more than 4). The lightest value will be the sky, middle value will be the grasses, darker middle will be the background and the darkest value will be the trees. He recommends making the major masses fit one of the 4 values in the range he’s picked. Establish the lightest and darkest areas from the start. He blocks in the basic values and then uses turpenoid to stain the paper to create the underpainting.

continued on next page...

Notes from Bob Rohm Demo & Mini Workshop *continued...*



Bob's reference photo



Initial block in



Adding initial color



Freshly Turpiped

Bob recommends organizing the values dark to light and controlling the values. Change the color rather than the value to simplify and make the scene less busy. Confused color equals mud.

Pick one area that will be more dynamic with sharper edges and contrast. The rest of the painting will be softer with softer edges and contrast. Establish which areas will be warm and which will be cool. Do not mix them. Remember the artist decides what is important. Choose the most important thing in the painting before you start.

To get the right value relationships lock in your lightest and darkest values early. Go ahead and get the sky in. The distant tree lines should be blue and purple. Sky can be blue and light yellow. Be sure to organize your masses, values and colors. After using mineral spirits or turpenoid and a brush to push the initial colors into the paper, re-establish your darks with hard pastels. Emphasize the most dynamic spot in the painting (focal point). Do not allow any other part of the painting to over power your most dynamic point.



Painting final stages.

Establish your extremes first. Bob noted that in summer there is a blue violet radiance between the trees and the sky but in winter that radiance is more of a reddish color. He recommends soft strokes with the side of that pastel and not to get heavy handed. He often uses a Nupastel to lightly soften the edges between light and dark and warm and cool areas. Remember that a painting that is all green is boring. There are other colors in trees and grasses including reds, browns, violets and blues. When adding flowers in the foreground do not allow them to over power unless they are the focal point. For most landscapes, Bob recommends using an orange, green and violet palette. Use pink for light on a dark brown.

April Challenge Paintings "Stormy Weather"

Photos by Chuck Roush



Pam Cummins



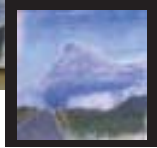
Nancy Taylor

See next page for more challenge paintings.

April Challenge Paintings “Stormy Weather” continued



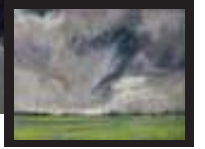
Kathleen Hornyak



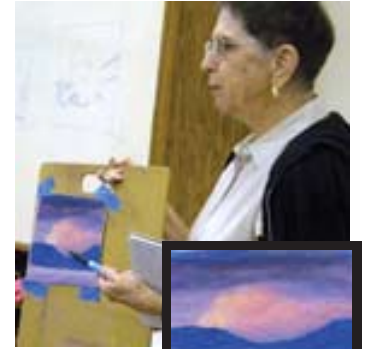
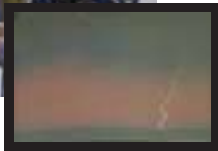
Jane Frederick



Margaret Roush



Holly Dunn



Martha Allan



Lucretia Coke Donnell demonstrates the plein air pastel set up designed and used by Frank Reaugh her teacher, friend and mentor.



Reaugh made the easels and boxes of pastels himself these are the colors in the typical box he created.

April Presentation by Lucretia Coke Donnell

Interviewed by Jeri Salter

Lucretia Coke began painting with Frank Reaugh as a young girl during the depression. He would take a group of artists on long camping trips in his specially adapted vehicle “the Cicada”. Lucretia went along with her mother as chaperone. Reaugh insisted his students complete 50 good pencil drawings before allowing them to advance to using color. For his outdoor sketches he designed, built and patented special laptop easels which could be used sitting down with a box of pastels on your lap. He also designed and hand made the pastel sets which he then sold to his students. See an example of one above. Lucretia became his biographer and was the executor of his estate when he passed away. Many of his paintings were donated to UT. Lucretia still has a good collection herself, many of which she brought to show us along with paintings she did herself. Reaugh often painted in West Texas. He advocated doing a thumbnail drawing of your composition first. Use that to check out the values and think out the painting. Then starting with the sky he would block in the sky and most distant areas first in blues, grays and light viridian to soften the horizon he often used his fingers. Frank Reaugh won a prize for the painting he entered in the 1893 World Fair. He believed that the more you paint the more color you will see in nature. Lucretia has published several books about Frank Reaugh and his art. More information can be found at www.frankreaugh.com

Central Texas Pastel Society Membership Form

A member of International Association of Pastel Societies

Central Texas Pastel Society was organized September 1997 to provide a support network for pastelists, and, to promote the soft pastel medium through monthly programs, exhibitions, workshops, lectures, competitions and group painting sessions.

Meetings are the third Saturdays monthly, from 9:30 a.m. to noon at the Windberg Art Center, Georgetown, TX.

Annual dues are: Individual Membership, \$30.00; Family Memberships (limited to 2 persons) \$45; Registered College Students with ID, \$25; and Seniors, age 65+ \$25.

Mail form & check to: CTPS, P O Box 3448, Temple, TX 76502

Name _____ Home Phone _____
Address _____

Cell Phone (optional) _____

City _____ Zip _____ Email _____

Birth Month & Day (Optional) _____ Spouse's first name _____

Website _____

Most members find that they enjoy becoming involved with the activities of the Society. Can you help?

Phone committee _____ Refreshments _____ Computer _____
Chair Committees _____ With Mail Outs _____ Show Helper _____

What can CTPS do for you? Select from the following categories. Check all that applies to you, or create your own comments below:

I am a: Hobbyist ___; Art Professional ___; Art Educator ___ Teach pastel classes? ___
My Interests: Portrait ___; Landscape ___; Figure ___; Abstract ___; Still Life ___; Other ___

Art Education Interests:
Workshops ___; 1-day ___; Weekend ___; Demonstration ___ Studio Time: Supervised ___
Open (no instructor) ___

Field Trips: Day ___; Weekend ___; Studio Tour ___; Museums ___

Your comments are welcome: _____

(CONTINUE ON BACK)

Member's Signature _____

Date _____ Ck # _____ Renewal? _____ New Member? _____